

***Temptop***

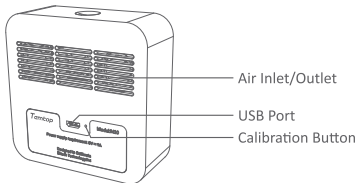
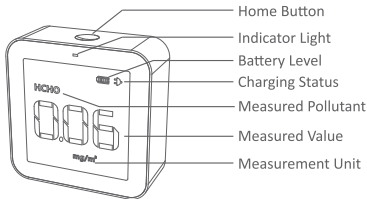
M10

EN

## Warnings!

- ★ Do not place the detector in the environment with formaldehyde(HCHO) concentration above  $0.5\text{mg}/\text{m}^3$  and PM2.5 above  $500\text{ug}/\text{m}^3$  for a long time. Otherwise, the sensor may be damaged and cannot run normally.
- ★ Do not use the detector in humid environment in order to maintain the detection accuracy.
- ★ Do not cover the air inlet/outlet while in use.
- ★ Try to avoid using the product in the environment with strong odour or pungent smell. Otherwise the high accuracy electrochemical sensor may be damaged.

## Appearance



## Specifications

---

Battery capacity: 2200mAh

PM2.5 sensor: Laser PM sensor

---

Battery life: Approx. 6 hours on a single charge

Measuring range (PM2.5): 0-999 $\mu\text{g}/\text{m}^3$

---

Input: DC 5V; 0.5A-1A

Resolution (PM2.5): 1 $\mu\text{g}/\text{m}^3$

---

Weight: 200g

PM2.5 sensor life: 3 years

---

Dimensions: 82x82x31 mm

HCHO Sensor: Electrochemical sensor

---

Measuring range (TVOC): 0-5 $\text{mg}/\text{m}^3$

Measuring range(HCHO): 0-2 $\text{mg}/\text{m}^3$

---

Resolution(TVOC): 0.01 $\text{mg}/\text{m}^3$

Resolution(HCHO): 0.01 $\text{mg}/\text{m}^3$

---

TVOC sensor life: 3 years

HCHO sensor life: 3 years

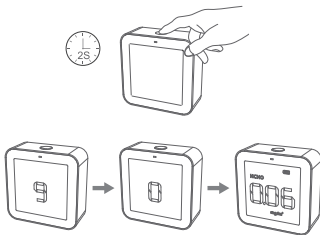
---

## Operations

1. Unpack and take out the detector. Place it outdoors for more than 6 hours for calibrations.

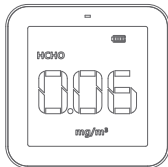


2. Turn ON the detector and wait for the countdowns.



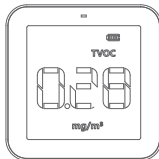
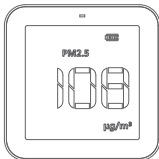
3. Use Home Button to display each measured pollutant:

HCHO concentration will display after power ON.



Press Home Button to enter PM2.5 concentration display screen.

Then press Home Button again to display TVOC concentration.



Press Home Button again to display AQI index. Press Home Button to repeat all these operations.



Note: Double press the Home Button to AUTO repeat these operations per 3 seconds display intervals.

Double press the Home Button again to exit AUTO display mode.

#### 4. Indicator Lights Introduction

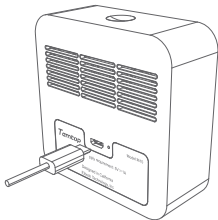
The indicator lights on the panel indicate the corresponding air quality:

Color	Green	Yellow	Red
Status	Good	Moderate	Unhealthy

The battery level indicator on the screen indicates the device charging status:

Color	Yellow	Green
Status	Charging	Full

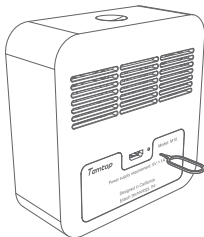
5. When the battery level is low, please charge by connecting it with USB cable and power supply.





6. It is suggested to calibrate the detector after three months usages. Please follow the manual instructions showing below:

- a) Turn ON the detector and wait for about 10 minutes.
- b) Use the pin to poke the calibration button until HCHO icon blinks on the screen.
- c) Place the detector outside for 10 minutes for ventilation.
- d) When HCHO icon does not blink, it indicates that the calibration has finished.



## Parameter Index for reference\*

Status Pollutant	Good	Moderate	Unhealthy
PM2.5	$<12\mu\text{g}/\text{m}^3$	$12.1\sim55.4\mu\text{g}/\text{m}^3$	$>55.5\mu\text{g}/\text{m}^3$
HCHO	$<0.1\text{mg}/\text{m}^3$	$0.1\sim0.3\text{ mg}/\text{m}^3$	$>0.3\text{ mg}/\text{m}^3$
TVOC	$<0.6\text{mg}/\text{m}^3$	$0.6\sim1.6\text{mg}/\text{m}^3$	$>1.6\text{mg}/\text{m}^3$
AQI	$<50$	$50\sim150$	$>150$

\*Please contact us or check out our website for more detailed index information.

## What's included

M10 Detector x 1

USB Cable x 1

User Manual x 1